



# Application Note

## Wireless Tank Level Monitoring and Inventory Control



**GAUGE | SWITCH | TRANSMITTER | DATALOGGER**

## Introduction

Monitoring high value liquids in Food, Oil, Chemical & Petrochemical Industries and Marine & Shipping industry, is a perpetual need. If these are stored in remote locations, or at customer's premises, it is all the more a challenge.

Of the various tank monitoring systems, most used are in open tanks, i.e tanks open to atmosphere. And most of these are hard wired.

Wired solutions are inherently expensive to install and implement. Many desired measurement points are cost prohibitive when one considers a cabled solution. Wireless sensors alleviate the need for copper wires, conduit, conduit racks and trenching which are costly and labor-intensive activities.

Wireless measurement is no longer just a novelty and has become a driving force for gathering information in a more cost-effective way.

**Ogauge Tank Monitoring System** catapults efficiency of your decision making by creating a central point for your tank data on a cloud, while making the installation on new and even existing tanks very easy.

Some features and advantages of the **Ogauge Tank Monitoring System** :

- powerful and secure tools to monitor levels in realtime
- targeted information to conduct sophisticated analytics
- geolocation
- increase in your efficiencies
- generate reports that show the key performance indicator of % of tank filled by customer by regions, and more.
- easy review of current and historical tank level information
- eliminate run outs
- schedule deliveries only when it's efficient
- communicate data via cellular or wifi
- remote locations are always accessible

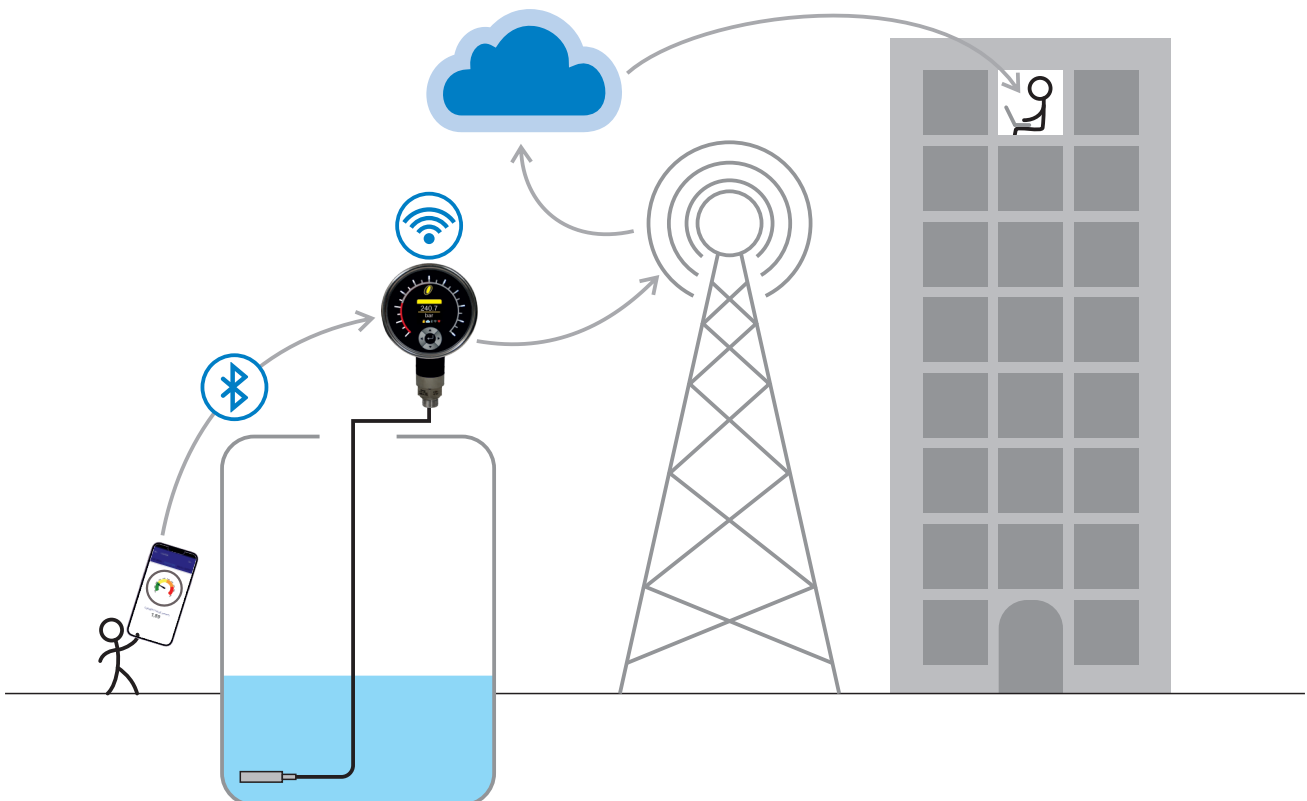
These choices offer maximum flexibility so you can choose the perfect balance of cost and performance for your business.

## Application

Though intended primarily for open tanks (tanks open to atmosphere) and generally for clear liquids, other Ogauge configurations can be used on closed tanks (pressurised tanks), or those containing slurries. These can be easily integrated into the Ogauge Tank Monitoring System, for improving efficiencies.

Following use case is primarily intended for open tanks with clear liquids.

Please contact [sales@ogauge.io](mailto:sales@ogauge.io) for your other requirements



## Implementation

Implementation of the system is extremely simple.

- Install Ogaugue level sensor (on the top of your tank containing the liquid)
- Configure it
- Start using it

The software is free. Though, a small fee is usually charged per device per month to cover the cloud maintenance charges.

### a. Installation of Ogaugue level sensor is very easy.

It can be used to measure liquid level in tanks which are

- Open Tanks
  - Overground
  - Underground
  - Partially underground
- Of any orientation
  - Vertical
  - Horizontal
- Of any shape
  - Circular
  - Rectangular
  - Irregular
- Of any size
  - Large
  - Small

Using an appropriate sensor is all that is needed.

Ogaugue level sensor can be mounted on top of the tank and wired suitably. Accessories are provided to make installation and operation easier.

- No switches
- No sight glasses / level gauges
- No level transmitters
- No PLC / DCS / SCADA
- No wiring
- No maintainance
- No programming
- No troubleshooting individual devices/installations.

All you need is an Ogaugue.

### b. Configuration of Ogaugue level sensor is very easy.

Though Ogaugue level sensor is mounted on top of the tank, it can be configured from within 20 feet by using a mobile app.

- No scaffolding
- No hot work permits
- No climbing tanks.

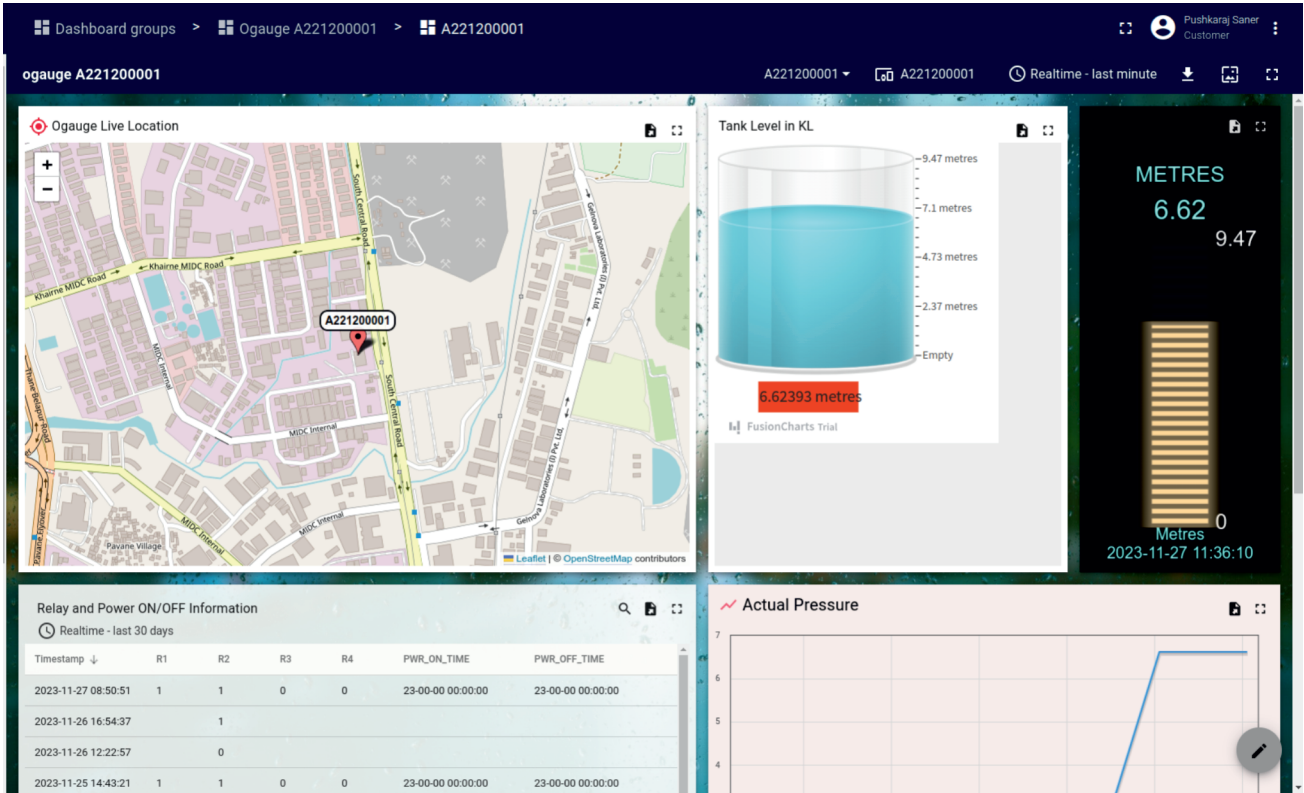
All one needs to do is configure the relays, transmitter outputs (if local PLC / SCADA / DCS is being insisted). All data can be seen on the cloud, once the Ogaugue is successfully paired to a wifi router or to the dongle (with activated SIM inserted) in the wiring accessory.

Ogaugue can be fitted on new tanks as also on any existing tanks for upgradation (instant telemetry).



**c. Using Ogaugue Tank Monitoring System is very easy.**

Ogaugue Tank Monitoring System is a turnkey solution... and scalable. From one tank to many. In one location or more than one location. All you need is one Ogaugue level sensor per tank. All the data will be in the cloud based software for you to profit from. Instantly.



**Note :** As efforts are made constantly to improve both design and method of manufacture, the apparatus supplied may differ in detail from illustration and data printed. Please check the specifications while ordering



Certificate No.: FM 72815

## Kaustubha Udyog

AN ISO9001:2015 COMPANY

S. No. 36/1/1, Sinhgad Road, Vadgaon Khurd, Near Lokmat Press, Pune 411 041. INDIA

Tel. : +91-(0) 20-24393577 / 24393877

Telefax : +91-(0) 20-24393577 / 25460486

Email : sales@ogauge.io

Website : [www.ogauge.io](http://www.ogauge.io)